

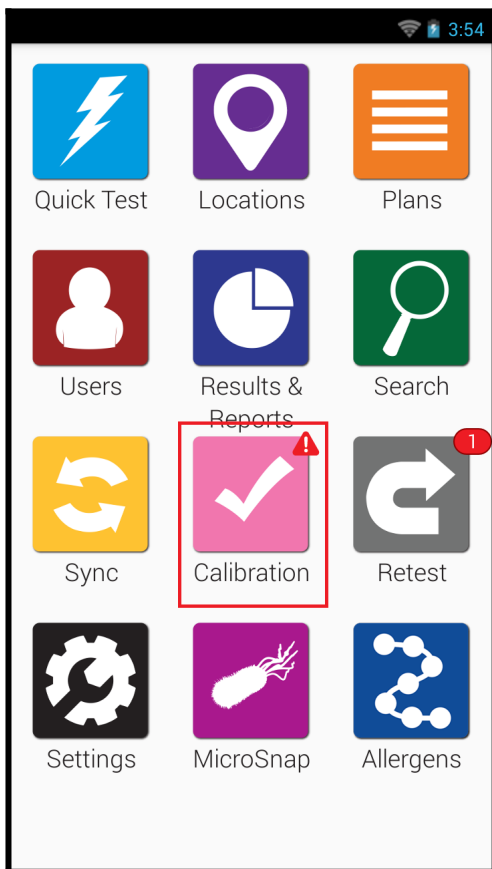
# Calibration Checks on the EnSURE Touch

## Introduction

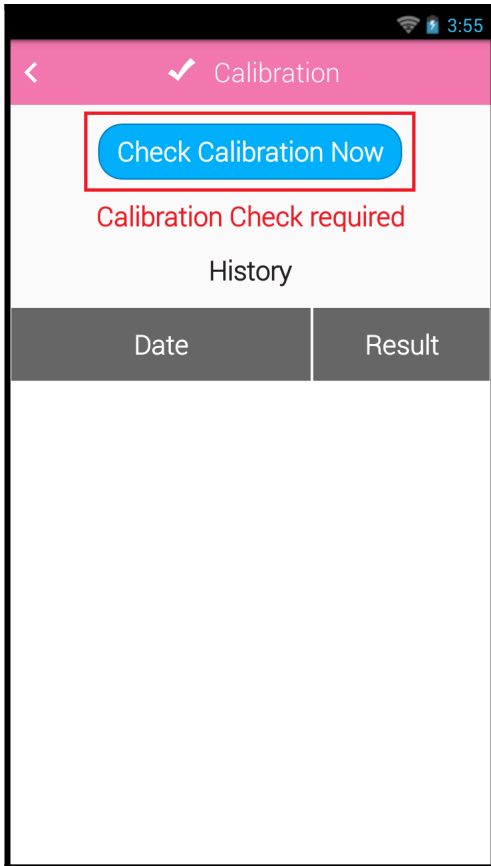
The EnSURE Touch™ allows users to verify the calibration of their instrument through the Calibration app using the CalCheck or calibration control kit. There are three tests in the calibration verification process, Internal LED Test, Negative Test and Positive Test. This article will provide instructions for performing a calibration check on the EnSURE Touch.

## Calibration

1. From the Home Screen, select the **Calibration** app.

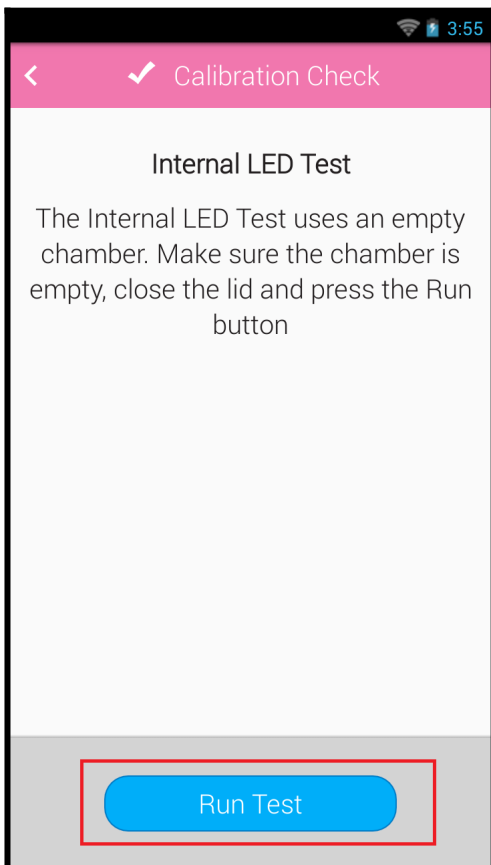


2. Tap **Check Calibration Now**.



3. Confirm the chamber is empty and tap **Run Test** to start the Internal LED Test.

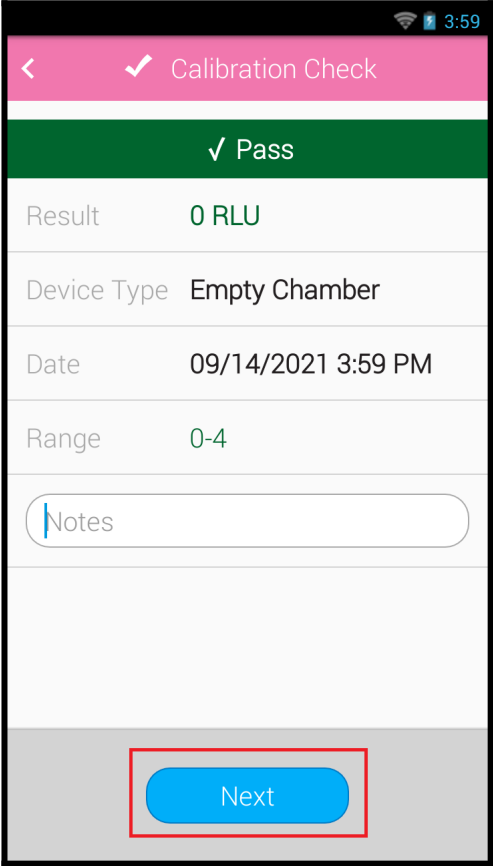
RLU values greater than 500 are passing.



4. Tap **Next**.

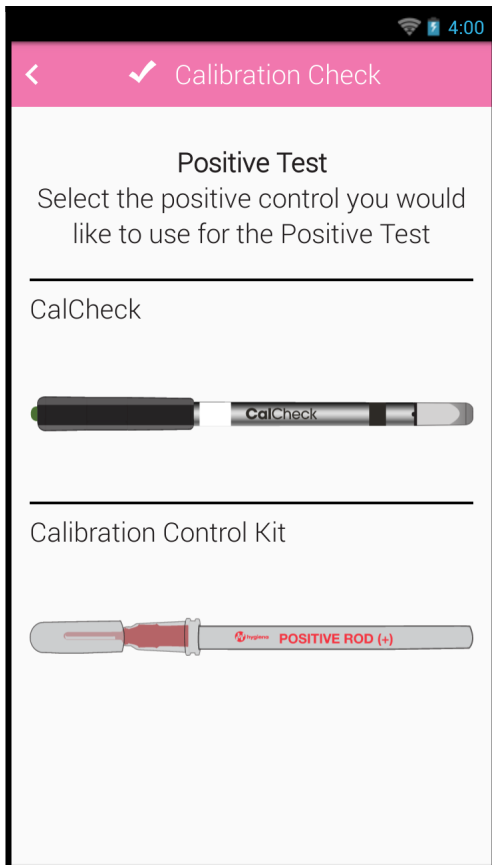
5. Confirm the chamber is empty and tap **Run Test** to start the Negative Test.

RLU values between 0-4 are passing.



6. Tap **Next**.

7. Tap the positive control you are using.

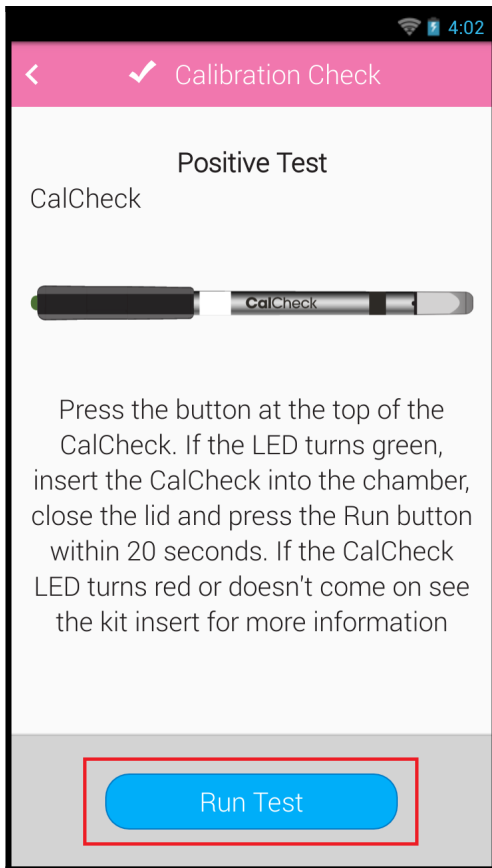


8. **For CalCheck:** Press the button at the top of the CalCheck. If the LED turns green, insert the CalCheck into the chamber, close the lid and press **Run Test** within 20 seconds. If the CalCheck LED turns red or doesn't come on see the kit insert for more information.

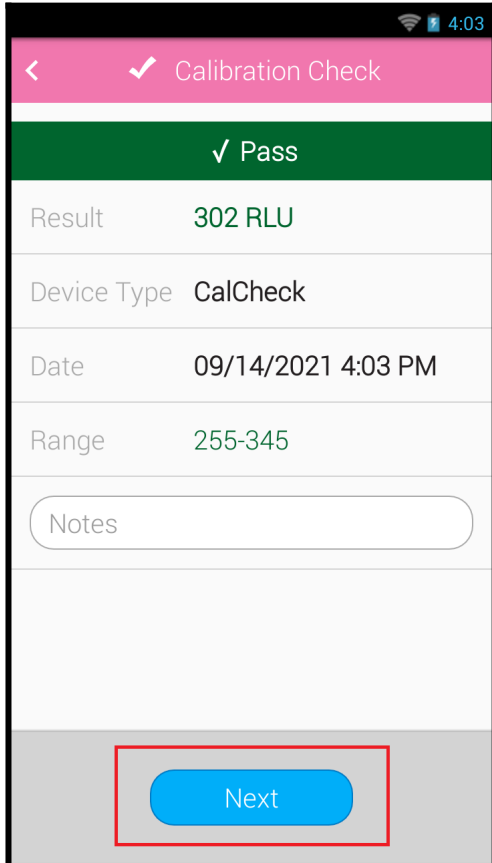
CalCheck results between 255-345 RLU are passing.

**For Calibration Control Kit:** Insert the Positive Control rod and tap **Run Test**.

Calibration Control Kit results between 140-220 are passing.



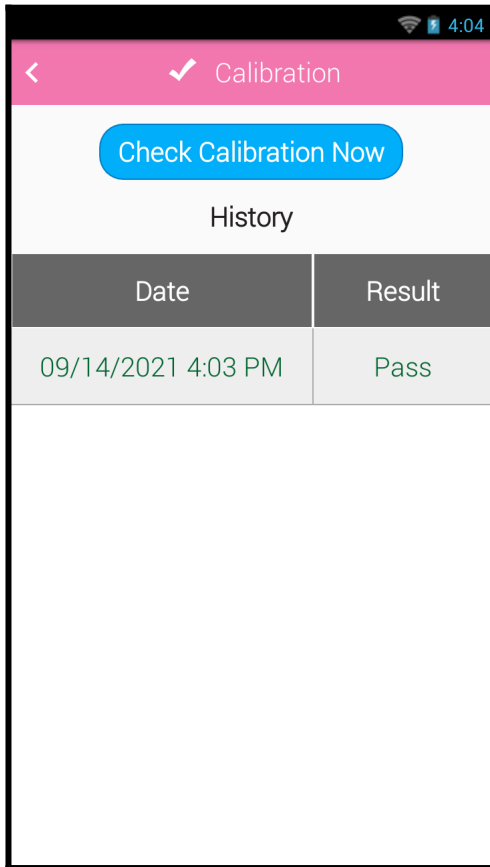
9. Tap **Next** to complete the test. If any of the test failed, please contact Hygiena Technical Support for assistance.



# Viewing Calibration History

## On the EnSURE Touch:

1. From the Home Screen, tap the **Calibration** app.
2. The table shows a history of calibration checks.
3. Tap a row on the table to view the results for each test.



## In SureTrend Cloud:

1. Click the **Instruments** tab.
2. Click the serial number of your instrument.
3. Click the **Calibration** tab.

The screenshot displays the SureTrend by Hygiena Instruments interface. At the top, there is a navigation bar with 'Instruments' selected. Below this, a table lists instruments with columns for Serial No, Instrument Name, Site, Calibration Check, Model, Software, and Last Sync. One instrument with Serial No 33075 is highlighted. Below the table, there is a sub-section for 'Instrument Serial No: 33075' with tabs for 'Locations/Samples', 'Plans', 'Users', 'Settings', and 'Calibration Checks'. The 'Calibration Checks' tab is active, showing a table with columns for Date, Positive, Negative, and Cal Status. The table contains two rows of data, both showing 'Pass' for the Cal Status.

Serial No	Instrument Name	Site	Calibration Check	Model	Software	Last Sync
33075		Default Site	Calibrated	EnsureTouch	1.92.5	15-Sep-2021 4:16 PM

Date	Positive	Negative	Cal Status
9/14/2021	Pass	Pass	Pass
9/14/2021	Pass	Pass	Pass

If you are having trouble with Calibration checks on your EnSURE Touch, please contact Hygiena Technical Support for assistance.

- Phone: 1-888-HYGIENA (1-888-494-4362)
- Email: [techsupport@hygiena.com](mailto:techsupport@hygiena.com)
- [Submit a Support Ticket](#)
- [Schedule a Microsoft Teams meeting](#)