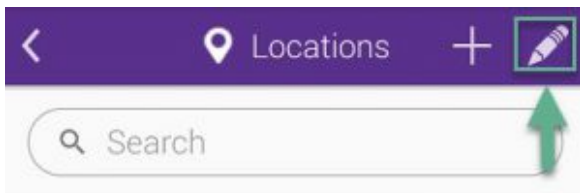


Deleting a location

Note

Deleting a location from your device does not remove any results that may have been created using it.

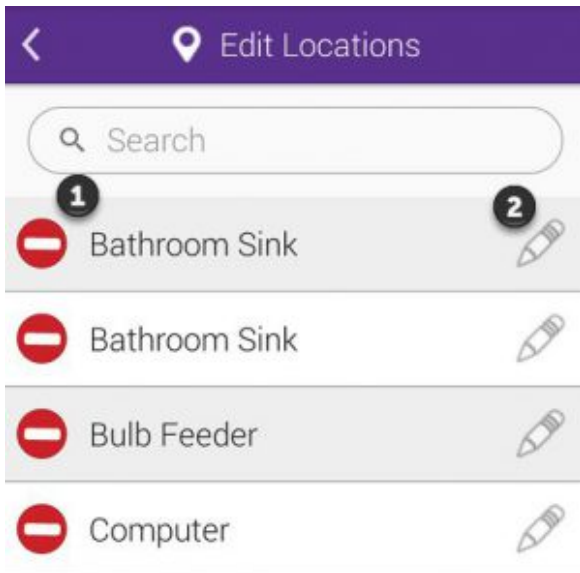
Step One



[Click to enlarge](#)

Touch on the pencil icon as shown in the image to modify an existing location.

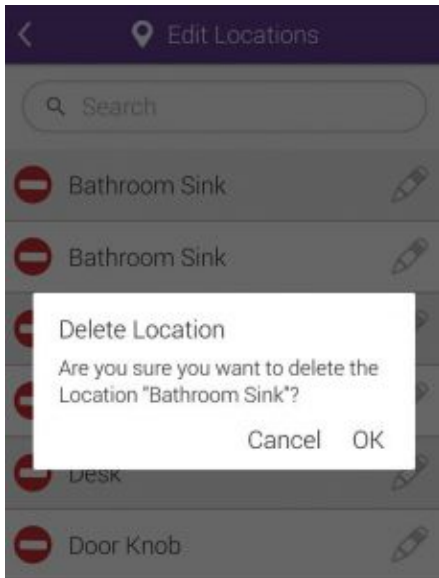
Step Two



Click to enlarge

Touch the remove icon as shown at **1** next to the name of the location you would like to remove from your device.

Step Three



Click to enlarge

You will be asked to confirm your action. Touch **OK** to continue and delete the location.